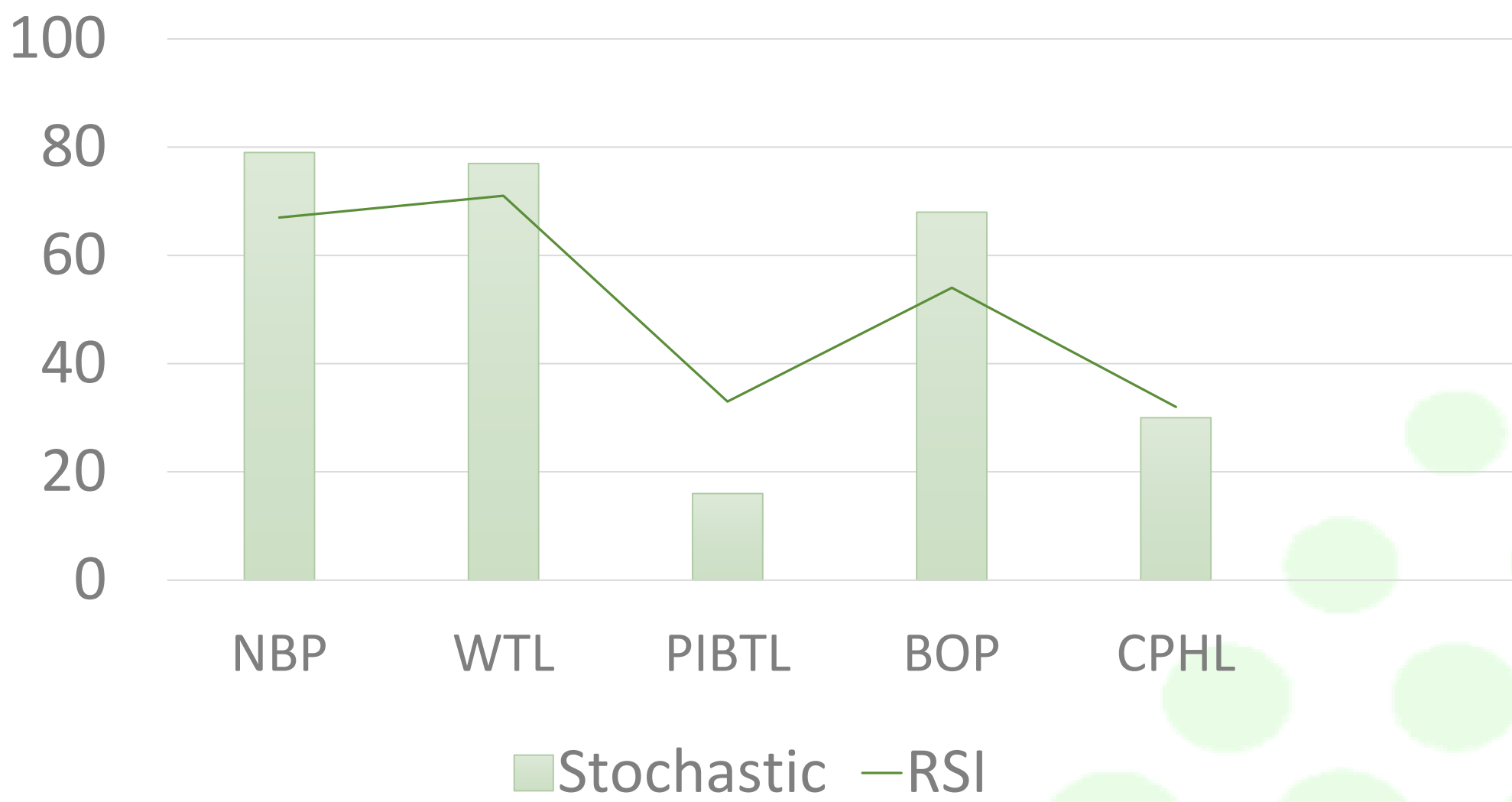


During the previous week, the Pakistan Stock Exchange (PSX) remained in the green zone driven by improved local liquidity and positive investor sentiment.

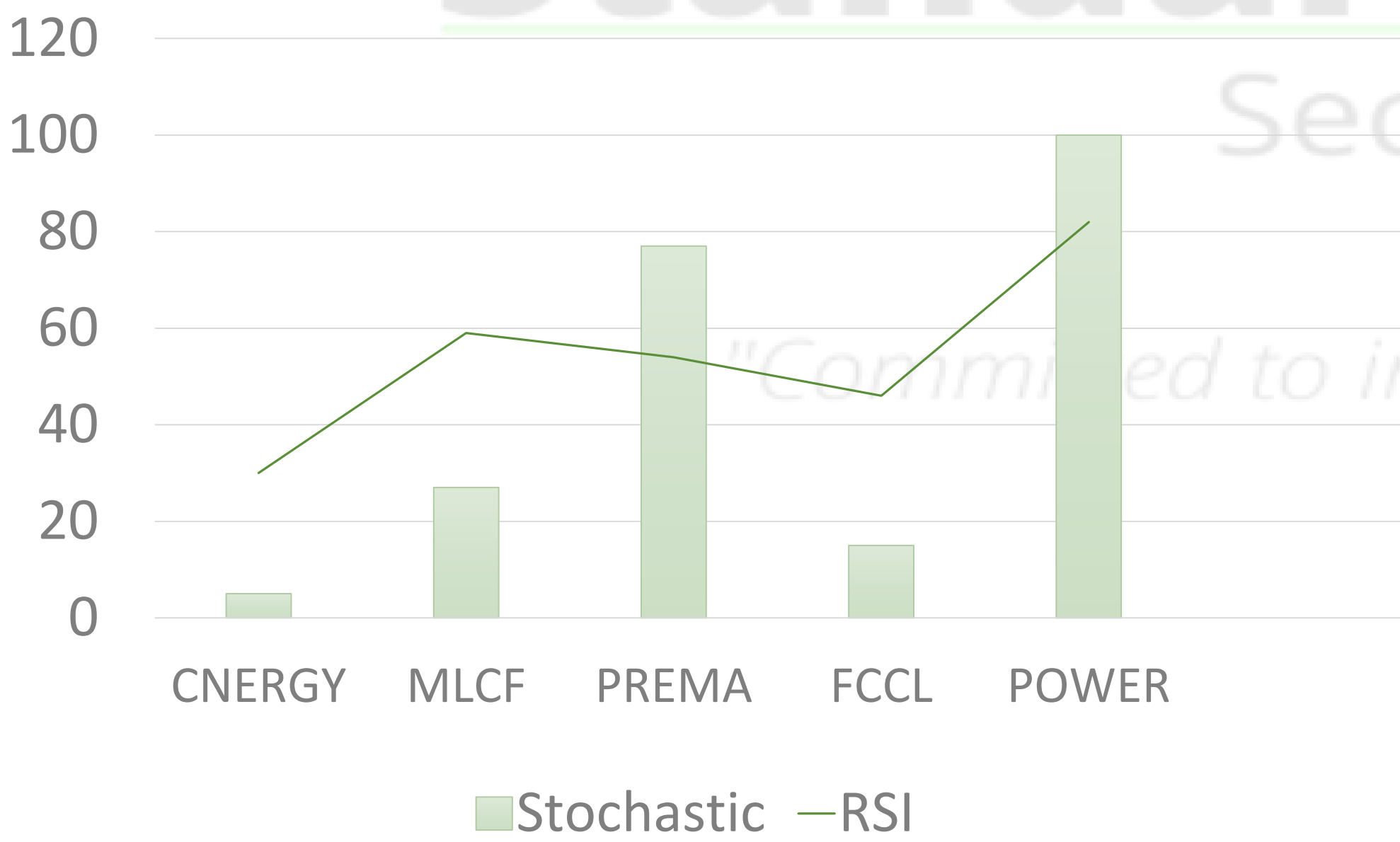
### RSI and Stochastic Indicators



### Volume Leaders

Symbol	Close	Change	Volume
NBP	79.1	(-1.14%)	23,799,736
WTL	1.41	(0.00%)	17,593,535
PIBTL	9.41	(-1.98%)	11,711,635
BOP	12.51	(-1.42%)	11,550,544
CPHL	85.58	(-8.04%)	10,720,267
CENERGY	7.35	(-3.03%)	6,762,246
MLCF	52.86	(-0.56%)	6,307,589
PREMA	26.6	(-10.01%)	4,533,995
FCCL	39.77	(-1.61%)	4,361,796
POWER	11.01	(-1.34%)	4,222,001

### RSI and Stochastic Indicators



Standard Capital Securities | Technical Desk  
UAN: 021-111-111-721  
[info@scstrade.com](mailto:info@scstrade.com)  
WWW.SCSTRADE.COM

Most Active in Market

SYMBOL	COMPANY NAME	CLOSE	MACD DAILY	MACD WEEKLY	RSI DAILY	SUP 1	SUP 2	RES 1	RES 2	SMA 60	SMA 200	52 WK HIGH	52 WK LOW
<a href="#">ATRL</a>	Attock Refinery Ltd. ...	613.66	Buy	Buy	46.15	607.45	601.23	622.43	631.19	640.48	459.20	775.75	293.50
<a href="#">DGKC</a>	D. G. Khan Cement Co...	120.99	Buy	Buy	65.25	119.13	117.26	122.83	124.66	105.80	90.63	124.75	63.01
<a href="#">LUCK</a>	Lucky Cement Ltd. Con...	1,424.16	Buy	Buy	68.52	1,405.21	1,386.25	1,444.01	1,463.85	1,196.82	993.42	1,535.51	710.53
<a href="#">NRL</a>	National Refinery Ltd. ...	231.57	Sell	Sell	32.88	225.42	219.26	241.31	251.04	271.53	250.09	341.50	198.00
<a href="#">OGDC</a>	Oil & Gas Development...	212.59	Buy	Buy	55.22	211.18	209.76	214.38	216.16	212.62	168.22	255.40	117.26
<a href="#">POL</a>	Pakistan Oilfields Ltd. ...	561.77	Sell	Sell	27.74	557.21	552.66	569.11	576.46	617.53	576.95	699.00	417.00
<a href="#">PPL</a>	Pakistan Petroleum Ltd.	173.29	Buy	Buy	45.64	170.86	168.44	175.85	178.42	184.68	142.75	216.50	103.60
<a href="#">PSO</a>	Pakistan State Oil Com...	335.34	Buy	Buy	40.40	332.97	330.61	338.74	342.15	372.44	243.39	465.00	154.20
<a href="#">SNGP</a>	Sui Northern Gas Pipeli...	94.81	Buy	Buy	57.25	93.07	91.33	96.98	99.15	96.90	78.67	115.75	60.50
<a href="#">SSGC</a>	Sui Southern Gas Com...	32.61	Buy	Buy	43.17	32.14	31.67	33.29	33.97	39.29	20.02	50.87	8.31
<a href="#">TRG</a>	TRG Pakistan Ltd.	59.79	Sell	Sell	37.92	58.94	58.10	61.19	62.60	64.34	58.49	77.99	44.03

# Today's AI Generated Signal

**DGKC - D. G. Khan Cement Company Ltd.**

**Signal: Sell**

**Signal Rate: 118.9**

**Next Signal: Buy When Price Closes Above 121.65**

**MCB - MCB Bank Ltd.**

**Signal: Sell**

**Signal Rate: 281.6**

**Next Signal: Buy When Price Closes Above 288.48**

**NCL - Nishat Chunian Ltd.**

**Signal: Sell**

**Signal Rate: 34.19**

**Next Signal: Buy When Price Closes Above 36.19**

**Standard Capital**  
Securities (PVT) LTD

*"Committed to intelligent investing"*



# AI Generated Open Positions (All)

## **AGP - AGP Ltd.**

**Current Signal State: Buy**

**Signal Initiated At: 170.3**

**Signal Initiated On: 19-Feb-25**

**Current Rate: 193.99**

**Profit / Loss: 13.91%**

**Next Signal: (Stop Loss) / Sell When Price Closes Below 185.25**

## **AIRLINK - Air Link Communication Ltd**

**Current Signal State: Sell**

**Signal Initiated At: 185.19**

**Signal Initiated On: 06-Feb-25**

**Current Rate: 174.85**

**Next Signal: Buy When Price Closes Above 194.45**

## **ASTL - Amreli Steels Ltd.**

**Current Signal State: Sell**

**Signal Initiated At: 24.84**

**Signal Initiated On: 21-Jan-25**

**Current Rate: 19.5**

**Next Signal: Buy When Price Closes Above 21.49**

## **ATRL - Attock Refinery Ltd.**

**Current Signal State: Sell**

**Signal Initiated At: 624.12**

**Signal Initiated On: 27-Feb-25**

**Current Rate: 614.79**

**Next Signal: Buy When Price Closes Above 624.98**

## **BAHL - Bank AL-Habib Ltd.**

**Current Signal State: Buy**

**Signal Initiated At: 136.84**

**Signal Initiated On: 17-Feb-25**

**Current Rate: 142.99**

**Profit / Loss: 4.49%**

**Next Signal: (Stop Loss) / Sell When Price Closes Below 141.01**

## **CHCC - Cherat Cement Company Ltd.**

**Current Signal State: Sell**

**Signal Initiated At: 268.41**

**Signal Initiated On: 25-Feb-25**

**Current Rate: 252.99**

**Next Signal: Buy When Price Closes Above 267**

## **DGKC - D. G. Khan Cement Company Ltd.**

**Current Signal State: Buy**

**Signal Initiated At: 110.07**

**Signal Initiated On: 18-Feb-25**

**Current Rate: 119.39**

**Profit / Loss: 8.47%**

**Next Signal: (Stop Loss) / Sell When Price Closes Below 120.01**

## **EFERT - Engro Fertilizers Ltd.**

**Current Signal State: Sell**

**Signal Initiated At: 223.29**

**Signal Initiated On: 28-Feb-25**

**Current Rate: 224.48**

**Next Signal: Buy When Price Closes Above 226.88**

## **ENGRO - Engro Corporation Ltd. Consolidated**

**Current Signal State: Buy**

**Signal Initiated At: 435.67**

**Signal Initiated On: 23-Dec-24**

**Current Rate: 0**

**Profit / Loss: -100.00%**

**Next Signal: (Stop Loss) / Sell When Price Closes Below 474.01**

## **FEROZ - Ferozsons Laboratories Ltd.**

**Current Signal State: Sell**

**Signal Initiated At: 320.19**

**Signal Initiated On: 28-Feb-25**

**Current Rate: 317**

**Next Signal: Buy When Price Closes Above 339**

**FFC - Fauji Fertilizer Company Ltd. Consolidated**  
**Current Signal State: Sell**  
**Signal Initiated At: 397.45**  
**Signal Initiated On: 28-Feb-25**  
**Current Rate: 396.05**  
**Next Signal: Buy When Price Closes Above 403**

**GHNI - Ghandhara Industries Ltd.**  
**Current Signal State: Sell**  
**Signal Initiated At: 661.2**  
**Signal Initiated On: 14-Feb-25**  
**Current Rate: 641.01**  
**Next Signal: Buy When Price Closes Above 678**

**GLAXO - Glaxosmithkline (Pak) Ltd.**  
**Current Signal State: Sell**  
**Signal Initiated At: 399.67**  
**Signal Initiated On: 20-Feb-25**  
**Current Rate: 395.4**  
**Next Signal: Buy When Price Closes Above 400**

**HBL - Habib Bank Ltd.**  
**Current Signal State: Sell**  
**Signal Initiated At: 173.05**  
**Signal Initiated On: 08-Jan-25**  
**Current Rate: 151.89**  
**Next Signal: Buy When Price Closes Above 158.5**

**HCAR - Honda Atlas Cars (Pakistan) Ltd.**  
**Current Signal State: Sell**  
**Signal Initiated At: 295.54**  
**Signal Initiated On: 14-Feb-25**  
**Current Rate: 281.49**  
**Next Signal: Buy When Price Closes Above 290.88**

**INIL - International Industries Ltd. Consolidated**  
**Current Signal State: Sell**  
**Signal Initiated At: 161.87**  
**Signal Initiated On: 14-Feb-25**  
**Current Rate: 157.25**  
**Next Signal: Buy When Price Closes Above 161.7**

**ISL - International Steels Ltd.**  
**Current Signal State: Sell**  
**Signal Initiated At: 82.28**  
**Signal Initiated On: 26-Feb-25**  
**Current Rate: 80.02**  
**Next Signal: Buy When Price Closes Above 83.8**

**LUCK - Lucky Cement Ltd. Consolidated**  
**Current Signal State: Buy**  
**Signal Initiated At: 1113.72**  
**Signal Initiated On: 30-Jan-25**  
**Current Rate: 1409.5**  
**Profit / Loss: 26.56%**  
**Next Signal: (Stop Loss) / Sell When Price Closes Below 1405**



**MCB - MCB Bank Ltd.**

**Current Signal State: Buy**

**Signal Initiated At: 284.49**

**Signal Initiated On: 24-Feb-25**

**Current Rate: 281.75**

**Profit / Loss: -0.96%**

**Next Signal: (Stop Loss) / Sell When Price Closes Below 282**

**MEBL - Meezan Bank Ltd.**

**Current Signal State: Buy**

**Signal Initiated At: 236.74**

**Signal Initiated On: 19-Feb-25**

**Current Rate: 242.5**

**Profit / Loss: 2.43%**

**Next Signal: (Stop Loss) / Sell When Price Closes Below 237.38**

**MLCF - Maple Leaf Cement Factory Ltd. Consolidated**

**Current Signal State: Buy**

**Signal Initiated At: 51.13**

**Signal Initiated On: 25-Feb-25**

**Current Rate: 53**

**Profit / Loss: 3.66%**

**Next Signal: (Stop Loss) / Sell When Price Closes Below 50.45**

**MUGHAL - Mughal Iron & Steels Ind. Ltd.**

**Current Signal State: Sell**

**Signal Initiated At: 72.73**

**Signal Initiated On: 25-Feb-25**

**Current Rate: 71.3**

**Next Signal: Buy When Price Closes Above 76.7**

**NCL - Nishat Chunian Ltd.**

**Current Signal State: Buy**

**Signal Initiated At: 31.79**

**Signal Initiated On: 07-Feb-25**

**Current Rate: 34.25**

**Profit / Loss: 7.74%**

**Next Signal: (Stop Loss) / Sell When Price Closes Below 34.62**

**NETSOL - Netsol Technology Ltd.**

**Current Signal State: Sell**

**Signal Initiated At: 140.62**

**Signal Initiated On: 24-Feb-25**

**Current Rate: 130.5**

**Next Signal: Buy When Price Closes Above 137.25**

**NML - Nishat Mills Ltd. Consolidated**

**Current Signal State: Buy**

**Signal Initiated At: 102.62**

**Signal Initiated On: 28-Feb-25**

**Current Rate: 101.89**

**Profit / Loss: -0.71%**

**Next Signal: (Stop Loss) / Sell When Price Closes Below 93.5**

**NRL - National Refinery Ltd.**

**Current Signal State: Sell**

**Signal Initiated At: 251.94**

**Signal Initiated On: 14-Feb-25**

**Current Rate: 233.89**

**Next Signal: Buy When Price Closes Above 244.89**

**OCTOPUS - Octopus Digital Limited**

**Current Signal State: Sell**

**Signal Initiated At: 60.53**

**Signal Initiated On: 13-Feb-25**

**Current Rate: 56.49**

**Next Signal: Buy When Price Closes Above 58.52**

**OGDC - Oil & Gas Development Company Ltd.**

**Current Signal State: Sell**

**Signal Initiated At: 208.88**

**Signal Initiated On: 26-Feb-25**

**Current Rate: 212.44**

**Next Signal: Buy When Price Closes Above 214**

**PIOC - Pioneer Cement Ltd.**

**Current Signal State: Buy**

**Signal Initiated At: 201.32**

**Signal Initiated On: 28-Feb-25**

**Current Rate: 201**

**Profit / Loss: -0.16%**

**Next Signal: (Stop Loss) / Sell When Price Closes Below 192.01**

**POL - Pakistan Oilfields Ltd.**

**Current Signal State: Sell**

**Signal Initiated At: 623.42**

**Signal Initiated On: 19-Dec-24**

**Current Rate: 564**

**Next Signal: Buy When Price Closes Above 583.99**

**PPL - Pakistan Petroleum Ltd.**

**Current Signal State: Sell**

**Signal Initiated At: 172.86**

**Signal Initiated On: 26-Feb-25**

**Current Rate: 170.65**

**Next Signal: Buy When Price Closes Above 175.99**

**PRL - Pakistan Refinery Ltd.**

**Current Signal State: Sell**

**Signal Initiated At: 35.07**

**Signal Initiated On: 26-Feb-25**

**Current Rate: 33.3**

**Next Signal: Buy When Price Closes Above 35.1**

**PSMC - Pak Suzuki Motor Company Ltd.**

**Current Signal State: Buy**

**Signal Initiated At: 609.16**

**Signal Initiated On: 04-Mar-24**

**Current Rate: 0**

**Profit / Loss: -100.00%**

**Next Signal: (Stop Loss) / Sell When Price Closes Below 609**

**PSO - Pakistan State Oil Company Ltd. Consolidated**

**Current Signal State: Sell**

**Signal Initiated At: 339.16**

**Signal Initiated On: 26-Feb-25**

**Current Rate: 332**

**Next Signal: Buy When Price Closes Above 341.95**

**SAZEW - Sazgar Engineering Works Ltd.**

**Current Signal State: Sell**

**Signal Initiated At: 1144.39**

**Signal Initiated On: 14-Feb-25**

**Current Rate: 1061**

**Next Signal: Buy When Price Closes Above 1122.99**



**SEARL - The Searle Company Ltd. Consolidated**  
**Current Signal State: Sell**  
**Signal Initiated At: 104.89**  
**Signal Initiated On: 03-Feb-25**  
**Current Rate: 84.57**  
**Next Signal: Buy When Price Closes Above 95.39**

**SNGP - Sui Northern Gas Pipelines Ltd.**  
**Current Signal State: Buy**  
**Signal Initiated At: 89.21**  
**Signal Initiated On: 24-Feb-25**  
**Current Rate: 94.16**  
**Profit / Loss: 5.55%**  
**Next Signal: (Stop Loss) / Sell When Price Closes Below 93.5**

**SSGC - Sui Southern Gas Company Ltd.**  
**Current Signal State: Buy**  
**Signal Initiated At: 34.18**  
**Signal Initiated On: 26-Feb-25**  
**Current Rate: 31.99**  
**Profit / Loss: -6.41%**  
**Next Signal: (Stop Loss) / Sell When Price Closes Below 31.41**

**SYS - Systems Ltd.**  
**Current Signal State: Sell**  
**Signal Initiated At: 547.23**  
**Signal Initiated On: 21-Feb-25**  
**Current Rate: 540**  
**Next Signal: Buy When Price Closes Above 562.5**

**TRG - TRG Pakistan Ltd.**  
**Current Signal State: Sell**  
**Signal Initiated At: 60.06**  
**Signal Initiated On: 25-Feb-25**  
**Current Rate: 58.5**  
**Next Signal: Buy When Price Closes Above 61.25**

**UBL - United Bank Ltd.**  
**Current Signal State: Sell**  
**Signal Initiated At: 395.29**  
**Signal Initiated On: 19-Feb-25**  
**Current Rate: 390**  
**Next Signal: Buy When Price Closes Above 404.99**

**Standard Capital**  
Securities (PVT) LTD

*"Committed to intelligent investing"*

# Glossary of Terms

**Support:** Support is the level at which the stock is likely to see increased interest from buyers. The buying support will prevent the stock from falling further.

**Resistance:** Resistance is the level at which the stock is likely to see increased interest from sellers. The selling pressure will prevent the stock from rising further.

**RSI:** The Relative Strength Index (RSI) is a momentum oscillator that ranges from 0 to 100. It compares the extent of the stock's recent price movements by evaluating recent gains and losses. Stocks with RSI above 70 could be considered overbought, and below 30 could be considered oversold. Generally, if the RSI falls below 70, it is a bearish signal. Conversely, if the RSI of a stock rises above 30 it is considered bullish. The RSI used is of 14 days.

**Bollinger Bands:** A Bollinger Band, developed by famous technical trader John Bollinger, is plotted two standard deviations away from a simple moving average. BB is a highly popular technical analysis technique. Many traders believe the closer the prices move to the upper band, the more overbought the market, and the closer the prices move to the lower band, the more oversold the market.

**MACD:** MACD shows the relationship between a longer period moving average and a short period Moving average of a stock's price. Generally, the 26-day exponential moving average (EMA) and the 12-day EMA are used to calculate MACD.

**EMA:** Exponential moving average (EMA) is the weighted average of the prices of a given security where higher weights are given to recent data points. EMA is used to analyze the trend of a stock.

**SMA:** A simple moving average (SMA) is the average of the closing price of a security for a given period. The parabolic SAR: is a technical indicator used to determine the price direction of an asset, as well as draw attention to when the price direction is changing. Sometimes known as the "stop and reversal system," the parabolic SAR was developed by J. Welles Wilder Jr., creator of the relative strength index (RSI).

## Disclaimer Section

This document has been prepared by technical analysts at Standard Capital Securities (SCS). This document does not constitute an offer or solicitation for the purchase or sale of any security. This publication is intended only for distribution to the clients of the Company who are assumed to be reasonably sophisticated investors that understand the risks involved in investing in equity securities. The information contained herein is based upon publicly available data and sources believed to be reliable. While every care was taken to ensure accuracy and objectivity, SCS does not represent that it is accurate or complete and it should not be relied on as such. In particular, the report takes no account of the investment objectives, financial situation and particular needs of investors. The information given in this document is as of the date of this report and there can be no assurance that future results or events will be consistent with this information. This information is subject to change without any prior notice. SCS reserves the right to make modifications and alterations to this statement as may be required from time to time. However, SCS is under no obligation to update or keep the information current. SCS is committed to providing independent and transparent recommendation to its client and would be happy to provide any information in response to specific client queries. Past performance is not necessarily a guide to future performance. This document is provided for assistance only and is not intended to be and must not alone be taken as the basis for any investment decision. The user assumes the entire risk of any use made of this information. Each recipient of this document should make such investigation as it deems necessary to arrive at an independent evaluation of an investment in the securities of companies referred to in this document (including the merits and risks involved), and should consult his or her own advisors to determine the merits and risks of such investment. SCS or any of its affiliates shall not be in any way responsible for any loss or damage that may be arise to any person from any inadvertent error in the information contained in this report.